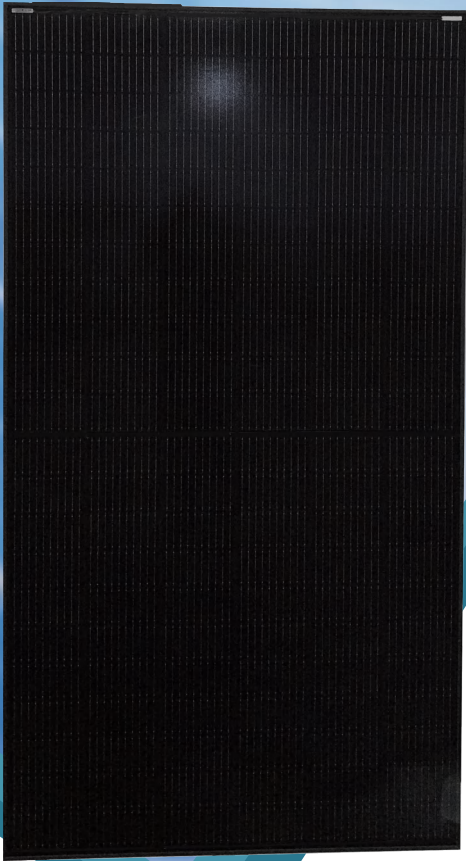




SpolarPV
Easy Invest, More Returns



21.49 %

Module efficiency

510 W

Highest power output



Product warranty



Linear power warranty

SPV510-PM10-132

490-510Watt



High Efficiency

Higher power conversion efficiency benefited from advanced Passivated Emitter and Rear Cell (PERC) technology.



Anti-reflection

Less than 20% reflectivity with minimum glare.



Good Mechanical Load Performance

Certified to withstand: wind load (2400 Pa), snow load and hail strike(5400 Pa) .



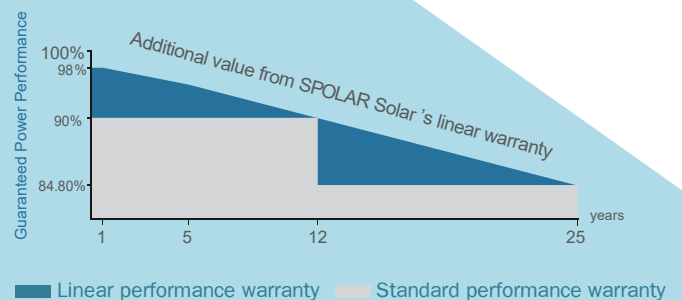
Low Light Performance Resilience

Advanced glass and cell surface texture designs ensure excellent performance in low light environment.



Durability Against Extreme Environmental Conditions

Good performance of Anti-PID, Ammonia and Salt mist certified by 2 PfG 2387/01.18, IEC61716 and IEC61701.



ISO9001:2016 ISO14001:2016
OHSAS18001:2011 certified factory.
IEC61215 IEC61730 certified products.

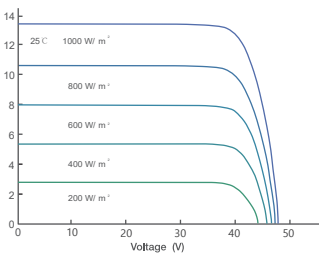
Electrical Characteristics at Standard Test Conditions (STC)

Module Type	SPV490-PM10-132	SPV495-PM10-132	SPV500-PM10-132	SPV505-PM10-132	SPV510-PM10-132
Maximum Power - Pmax (W)	490	495	500	505	510
Maximum Power Voltage - Vmp (V)	38.56	38.78	39.05	39.28	39.48
Maximum Power Current - Imp (A)	12.70	12.77	12.81	12.87	12.92
Open-circuit Voltage - Voc (V)	46.05	46.34	46.64	46.93	47.22
Short-circuit Current - Isc (A)	13.47	13.52	13.57	13.62	13.67
Module Efficiency STC (%)	20.65 %	20.86 %	21.07 %	21.29 %	21.49 %

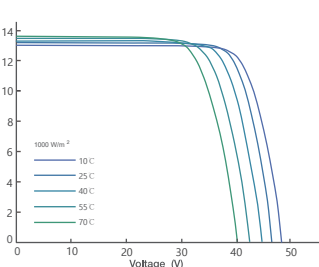
Electrical Characteristics at Normal Operating Cell Temperature (NOCT)

Module Type	SPV490-PM10-132	SPV495-PM10-132	SPV500-PM10-132	SPV505-PM10-132	SPV510-PM10-132
Maximum Power - Pmax (W)	366	370	373	377	380
Maximum Power Voltage - Vmp (V)	36.01	36.21	36.38	36.62	36.79
Maximum Power Current - Imp (A)	10.16	10.20	10.27	10.28	10.33
Open-circuit Voltage - Voc (V)	43.21	43.41	43.62	43.82	44.06
Short-circuit Current - Isc (A)	10.77	10.81	10.85	10.89	10.93
Power Tolerance	0 ~ +3W		Operating Temperature (°C)		-40 °C ~ +85 °C
Temperature Coefficients of Pmax	-0.35% / °C		Maximum System Voltage		1500 V
Temperature Coefficients of Voc	-0.275% / °C		Maximum Series Fuse Rating		25 A
Temperature Coefficients of Isc	0.045% / °C		Nominal Operating Cell Temperature		45 ± 2 °C

Current-Voltage Curve under different irradiance

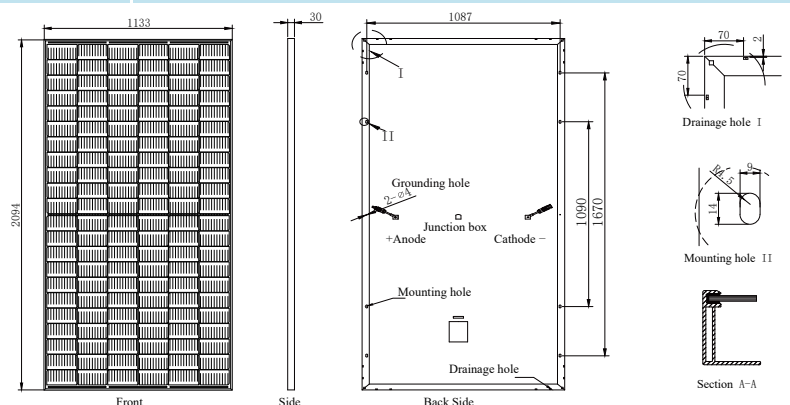


Current-Voltage Curve under different working temperatures



Mechanical Characteristics

Cell Type	Mono-crystalline PERC 182x91 mm
No. of Cells	132 (6x22)
Dimensions	2094x1133x30 mm
Weight	25.5 kg
Glass	3.2mm, High Transmission, Low Iron, Tempered Glass
Frame	Anodized Aluminium Alloy
Junction Box	IP68, MC4 Compatible, 3 Bypass Diode
Output Cables	1x4.0 mm ² , Length: 1200 mm
Packaging Configuration	74pcs/stack, 814pcs/40'HQContainer (Two pallets=One stack)



www.spolarpv.com